

Rosefield Solar Farm

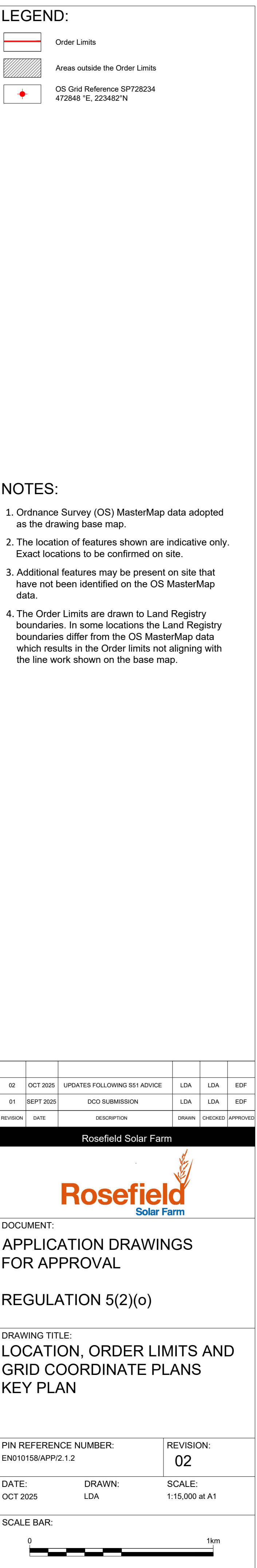
Location, Order Limits and Grid Coordinate Plans

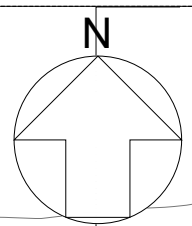
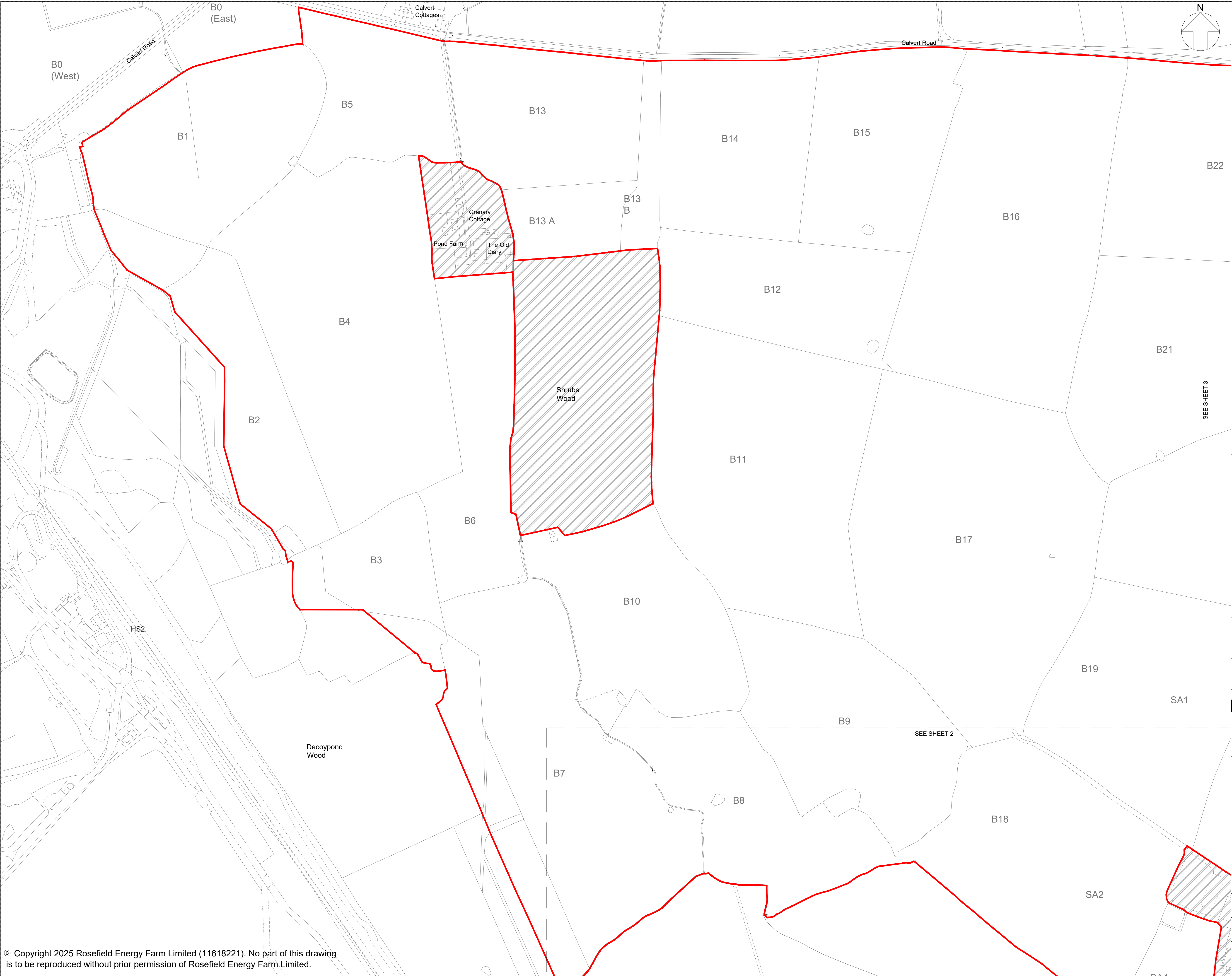
APFP Regulation Reg 5(2)(o)
Planning Act 2008
Infrastructure Planning
(Applications: Prescribed Forms
and Procedure) Regulations 2009
EN010158/APP/2.1.2
Revision 02
October 2025
Rosefield Energyfarm Limited



2.1.2 Location, Order Limits and Grid Coordinate Plans

Drawing number	Revision number	Drawing title	Scale	Reason For Revision
2.1.2	02	Location, Order Limits and Grid Coordinate Plans – Key Plan	1:15,000 (Key Plan) @ A1	Updated the north point to include a letter N. Updated labelling
2.1.2	02	Location, Order Limits and Grid Coordinate Plans – Sheet 1 of 8	1:2,500 @ A1	Updated the north point to include a letter N. Updated labelling
2.1.2	02	Location, Order Limits and Grid Coordinate Plans – Sheet 2 of 8	1:2,500 @ A1	Updated the north point to include a letter N. Updated labelling
2.1.2	02	Location, Order Limits and Grid Coordinate Plans – Sheet 3 of 8	1:2,500 @ A1	Updated the north point to include a letter N. Updated labelling
2.1.2	02	Location, Order Limits and Grid Coordinate Plans – Sheet 4 of 8	1:2,500 @ A1	Updated the north point to include a letter N. Updated labelling
2.1.2	02	Location, Order Limits and Grid Coordinate Plans – Sheet 5 of 8	1:2,500 @ A1	Updated the north point to include a letter N. Updated labelling
2.1.2	02	Location, Order Limits and Grid Coordinate Plans – Sheet 6 of 8	1:2,500 @ A1	Updated the north point to include a letter N. Updated labelling
2.1.2	02	Location, Order Limits and Grid Coordinate Plans – Sheet 7 of 8	1:2,500 @ A1	Updated the north point to include a letter N. Updated labelling
2.1.2	02	Location, Order Limits and Grid Coordinate Plans – Sheet 8 of 8	1:2,500 @ A1	Updated the north point to include a letter N. Updated labelling. Sheet extents updated.





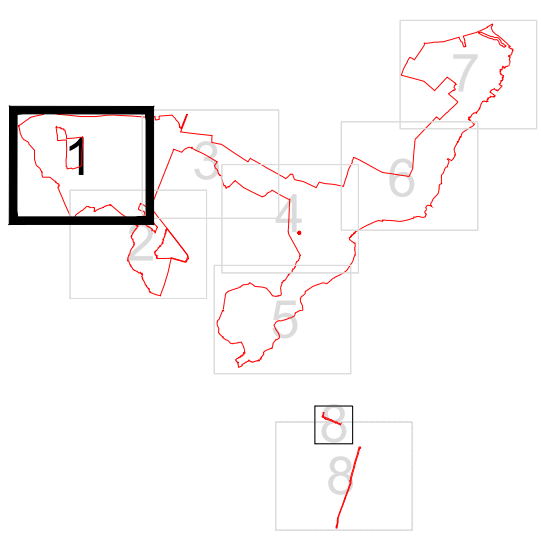
LEGEND:

- Order Limits
- Areas outside the Order Limits
- OS Grid Reference SP728234 472848 'E', 223482 'N'

NOTES:

1. Refer to key plan for notes.

KEY PLAN:



02	OCT 2025	UPDATES FOLLOWING S51 ADVICE	LDA	LDA	EDF
01	SEPT 2025	DICO SUBMISSION	LDA	LDA	EDF
REVISION	DATE	DESCRIPTION	DRAWN	CHECKED	APPROVED

Rosefield Solar Farm



DOCUMENT:
**APPLICATION DRAWINGS
FOR APPROVAL**

REGULATION 5(2)(o)

DRAWING TITLE:
**LOCATION, ORDER LIMITS AND
GRID COORDINATE PLANS
SHEET 1 OF 8**

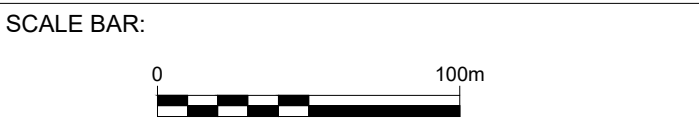
PIN REFERENCE NUMBER:
EN010158/APP/2.1.2

REVISION:
02

DATE:
OCT 2025

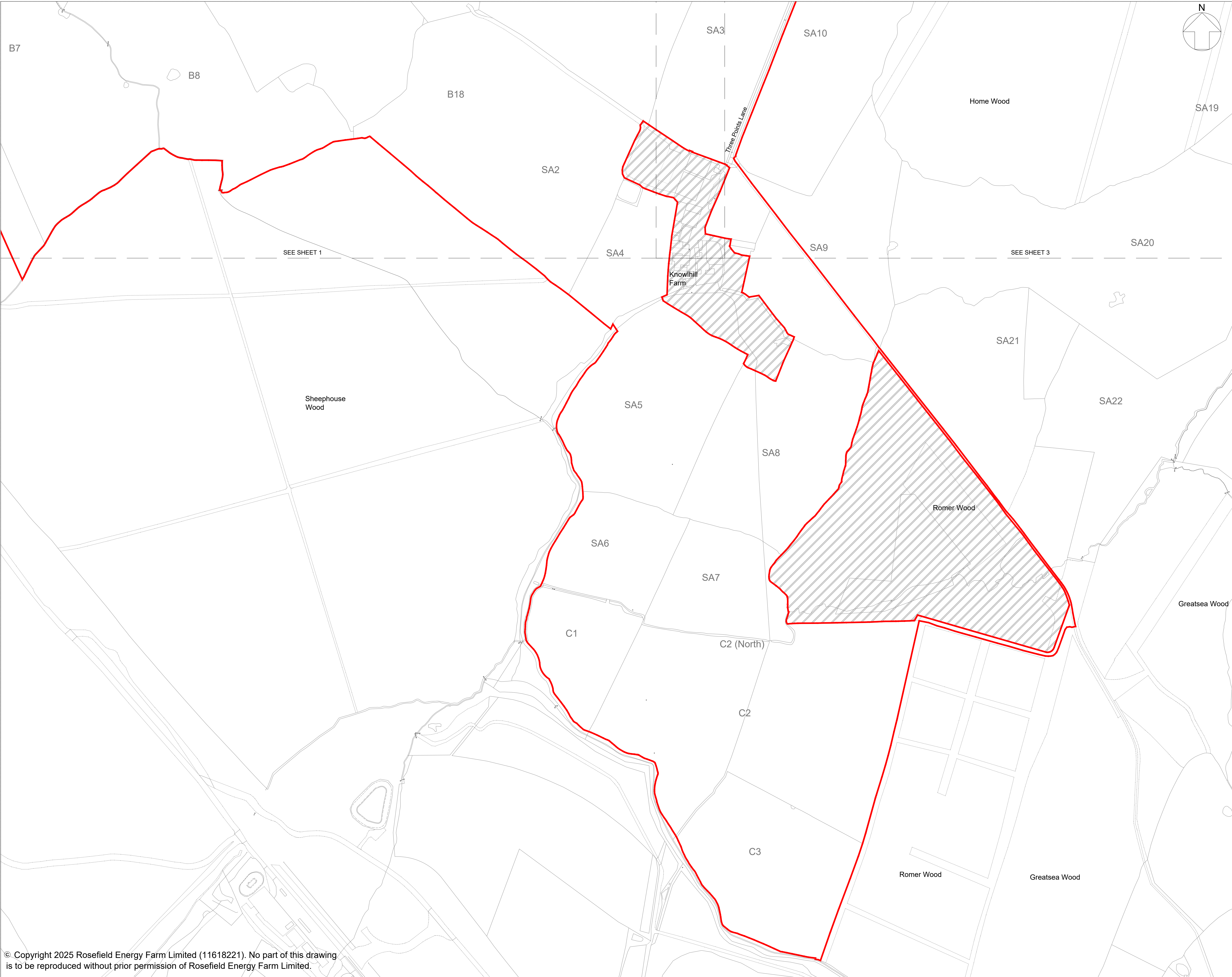
DRAWN:
LDA

SCALE:
1:2,500 at A1



© Copyright 2025 Rosefield Energy Farm Limited (11618221). No part of this drawing is to be reproduced without prior permission of Rosefield Energy Farm Limited.

This drawing may contain: Ordnance Survey material by permission of Ordnance Survey on behalf of the Controller of His Majesty's Stationery Office © Crown Copyright 2024. All rights reserved. Reference number 0100031673
OS Open data / © Natural England / © DEFRA / © DECC / © English Heritage. Aerial Photography - ESRI, DigitalGlobe, GEOEye, i-cubed, USDA FSA, USGD, AEX, Getmapping, Aerogrid, IGN/JGP, swisstopo, the GIS User Community



LEGEND:

- Order Limits
- Areas outside the Order Limits
- OS Grid Reference SP728234 472848 'E', 223482 'N'

NOTES:

1. Refer to key plan for notes.

KEY PLAN:

02	OCT 2025	UPDATES FOLLOWING S51 ADVICE	LDA	LDA	EDF
01	SEPT 2025	DICO SUBMISSION	LDA	LDA	EDF
REVISION	DATE	DESCRIPTION	DRAWN	CHECKED	APPROVED

Rosefield Solar Farm

DOCUMENT:
APPLICATION DRAWINGS FOR APPROVAL

REGULATION 5(2)(o)

DRAWING TITLE:
LOCATION, ORDER LIMITS AND GRID COORDINATE PLANS
SHEET 2 OF 8

PIN REFERENCE NUMBER:
EN010158/APP/2.1.2

REVISION:
02

DATE:
OCT 2025

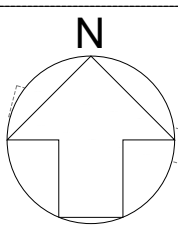
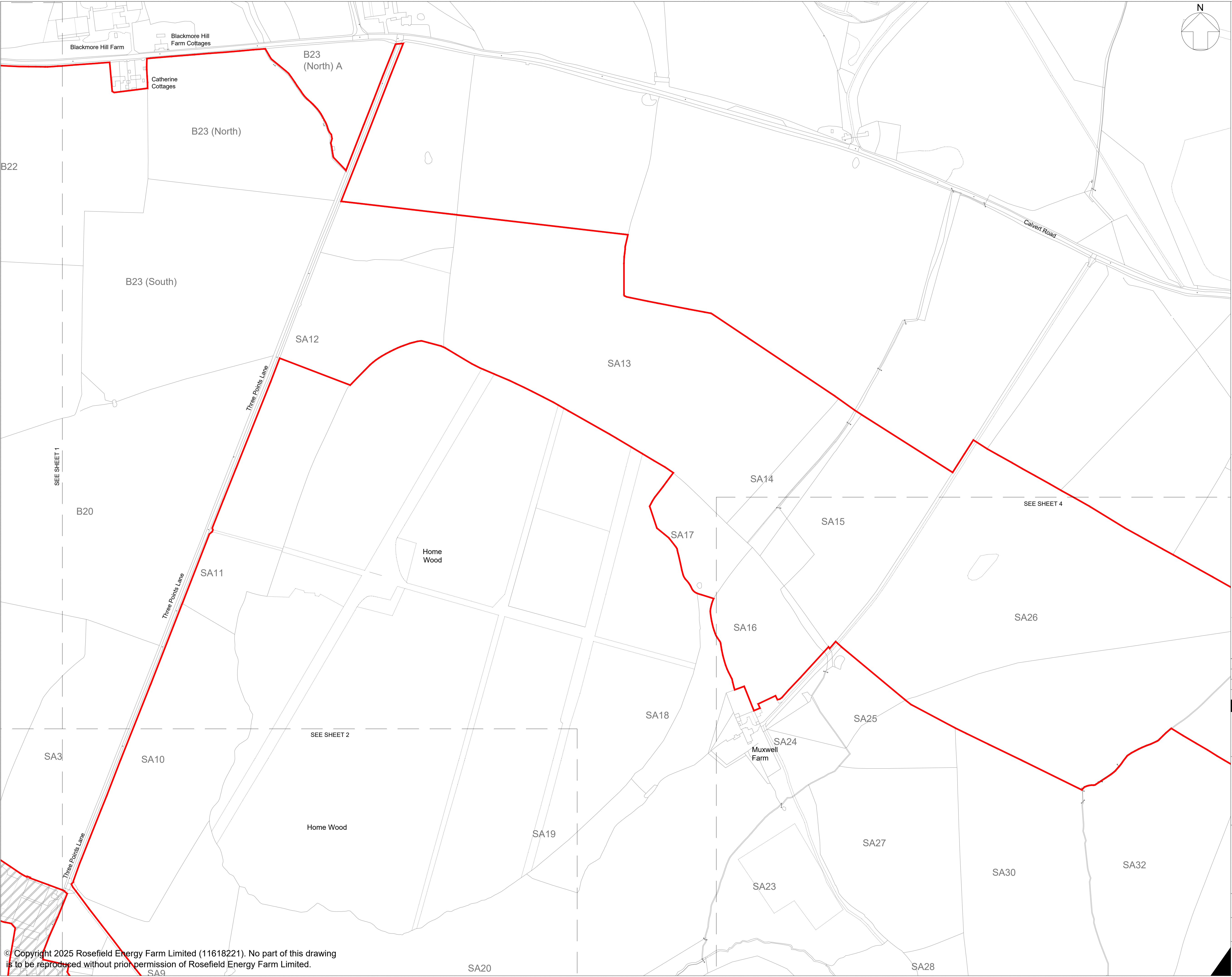
DRAWN:
LDA

SCALE:
1:2,500 at A1




SCALE BAR:

© Copyright 2025 Rosefield Energy Farm Limited (11618221). No part of this drawing is to be reproduced without prior permission of Rosefield Energy Farm Limited.

This drawing may contain: Ordnance Survey material by permission of Ordnance Survey on behalf of the Controller of His Majesty's Stationery Office © Crown Copyright 2024. All rights reserved. Reference number 0100031673
OS Open data / © Natural England / © DEFRA / © DECC / © English Heritage. Aerial Photography - ESRI, DigitalGlobe, GEOEye, i-cubed, USDA FSA,USGD, AEX, Getmapping, Aerogrid, IGN,JGP,swisstopo, the GIS User Community



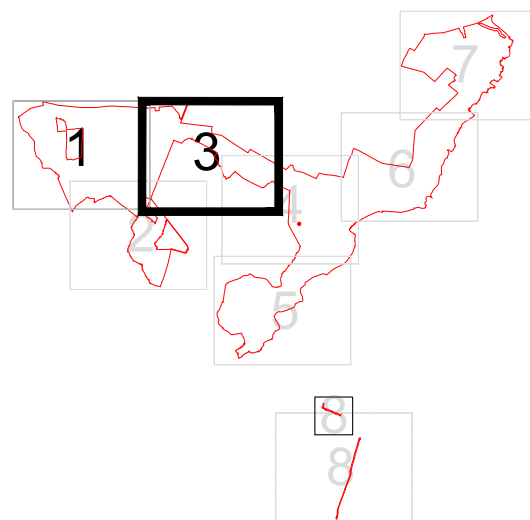
LEGEND:

-  Order Limits
-  Areas outside the Order Limits
-  OS Grid Reference SPT28234 472848 'E, 223482' N

NOTES:

1. Refer to key plan for notes.

KEY PLAN:



02	OCT 2025	UPDATES FOLLOWING S51 ADVICE	LDA	LDA	EDF
01	SEPT 2025	DICO SUBMISSION	LDA	LDA	EDF
REVISION	DATE	DESCRIPTION	DRAWN	CHECKED	APPROVED

Rosefield Solar Farm



DOCUMENT:
APPLICATION DRAWINGS
FOR APPROVAL

REGULATION 5(2)(o)

DRAWING TITLE:
LOCATION, ORDER LIMITS AND
GRID COORDINATE PLANS
SHEET 3 OF 8

PIN REFERENCE NUMBER:
EN010158/APP/2.1.2

REVISION:
02

DATE:
OCT 2025

DRAWN:
LDA

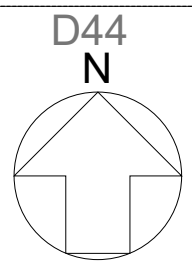
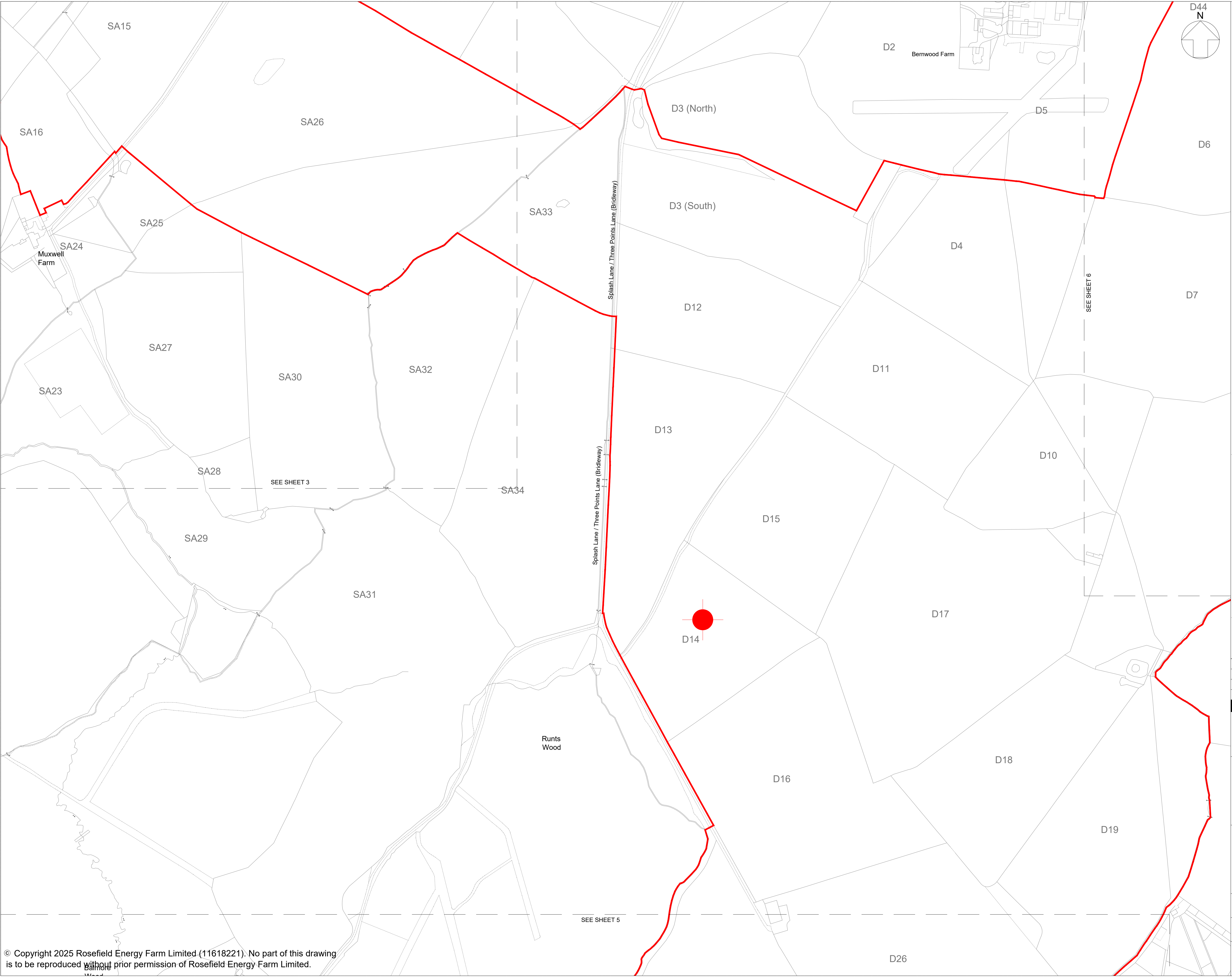
SCALE:
1:2,500 at A1

SCALE BAR:



© Copyright 2025 Rosefield Energy Farm Limited (11618221). No part of this drawing is to be reproduced without prior permission of Rosefield Energy Farm Limited.

This drawing may contain Ordnance Survey material by permission of Ordnance Survey on behalf of the Controller of His Majesty's Stationery Office © Crown Copyright 2024. All rights reserved. Reference number 0100031673 OS Open data / © Natural England / © DEFRA / © DECC / © English Heritage. Aerial Photography - ESRI, DigitalGlobe, GEOEye, i-cubed, USDA FSA, USGD, AEX, Getmapping, Aerogrid, IGN, JGP, swisstopo, the GIS User Community

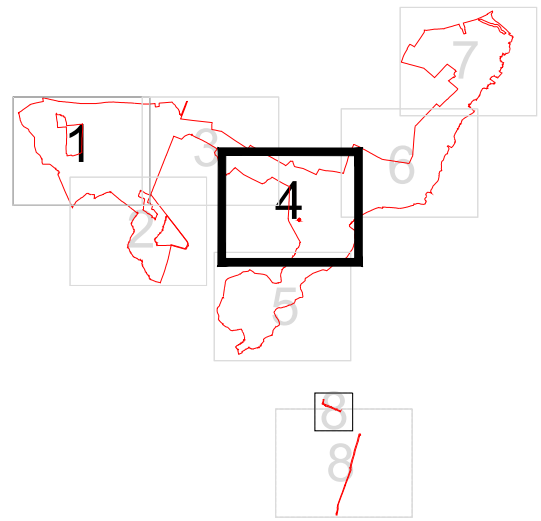


- LEGEND:**
- Order Limits
 - Areas outside the Order Limits
 - OS Grid Reference SP728234 472848 'E, 223482' N

NOTES:

1. Refer to key plan for notes.

KEY PLAN:



02	OCT 2025	UPDATES FOLLOWING S51 ADVICE	LDA	LDA	EDF
01	SEPT 2025	DICO SUBMISSION	LDA	LDA	EDF
REVISION	DATE	DESCRIPTION	DRAWN	CHECKED	APPROVED

Rosefield Solar Farm



DOCUMENT:
**APPLICATION DRAWINGS
FOR APPROVAL**

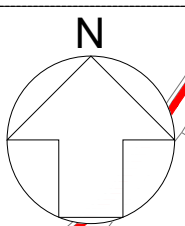
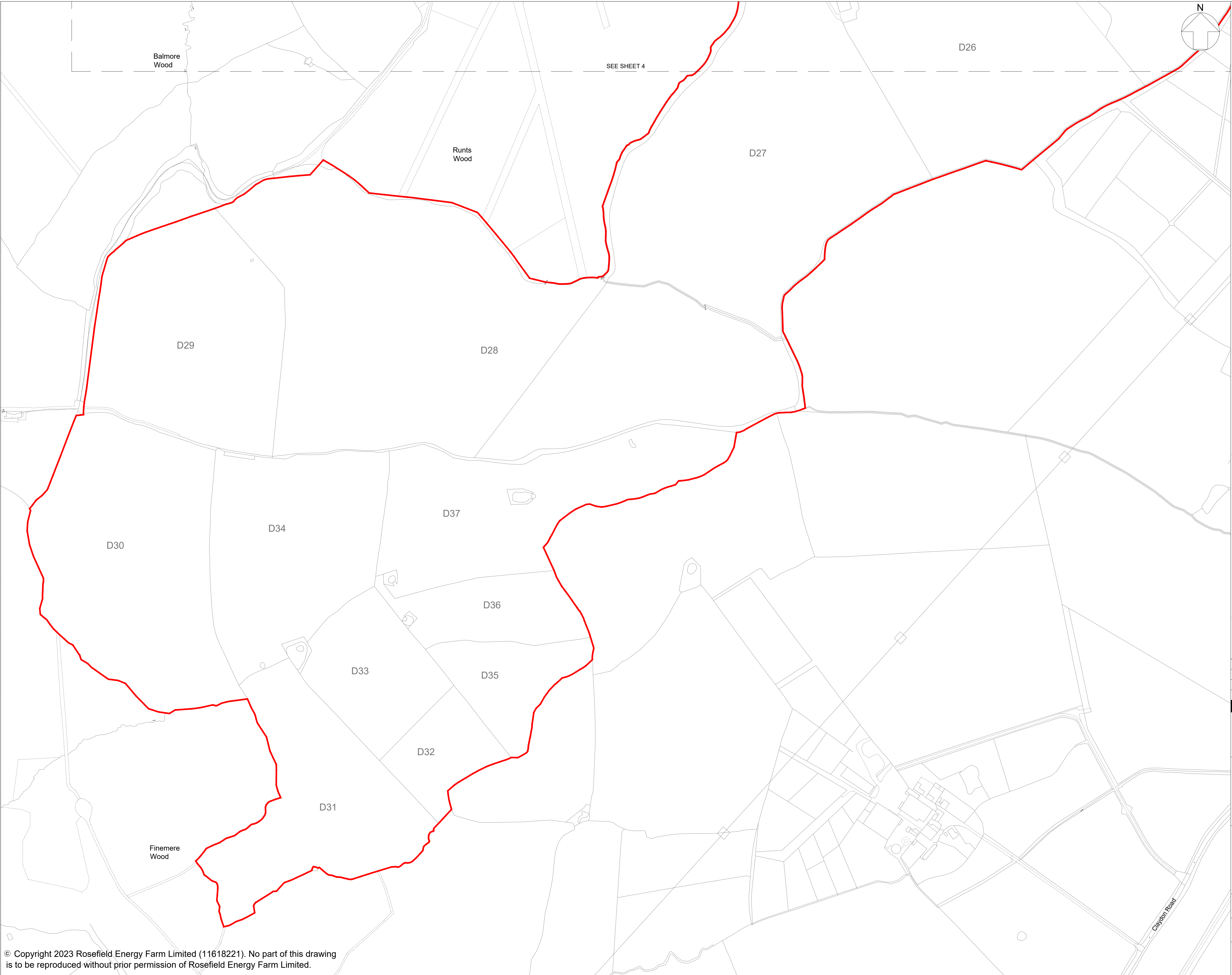
REGULATION 5(2)(o)

DRAWING TITLE:
**LOCATION, ORDER LIMITS AND
GRID COORDINATE PLANS
SHEET 4 OF 8**

PIN REFERENCE NUMBER: EN010158/APP/2.1.2			REVISION: 02		
---	--	--	------------------------	--	--

DATE: OCT 2025	DRAWN: LDA	SCALE: 1:2,500 at A1
-------------------	---------------	-------------------------





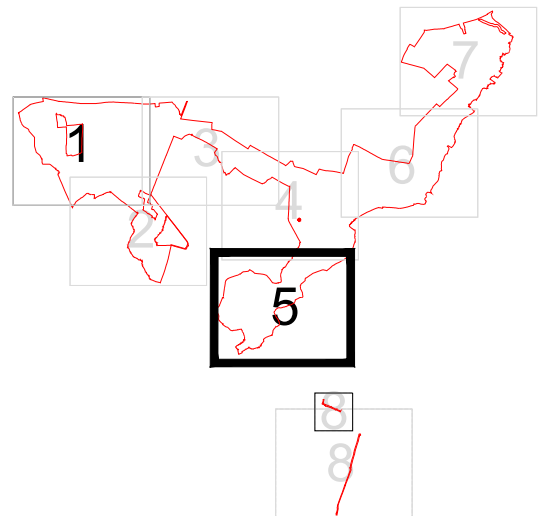
LEGEND:

- Order Limits
- Areas outside the Order Limits
- OS Grid Reference SPT28234 472848 'E, 223482' N

NOTES:

1. Refer to key plan for notes.

KEY PLAN:



02	OCT 2025	UPDATES FOLLOWING S51 ADVICE	LDA	LDA	EDF
01	SEPT 2025	DCO SUBMISSION	LDA	LDA	EDF
REVISION	DATE	DESCRIPTION	DRAWN	CHECKED	APPROVED

Rosefield Solar Farm

DOCUMENT:
APPLICATION DRAWINGS FOR APPROVAL

REGULATION 5(2)(o)

DRAWING TITLE:
LOCATION, ORDER LIMITS AND GRID COORDINATE PLANS SHEET 5 OF 8

PIN REFERENCE NUMBER:
EN010158/APP/2.1.2

REVISION:
02

DATE:
OCT 2025

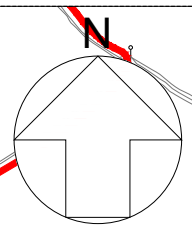
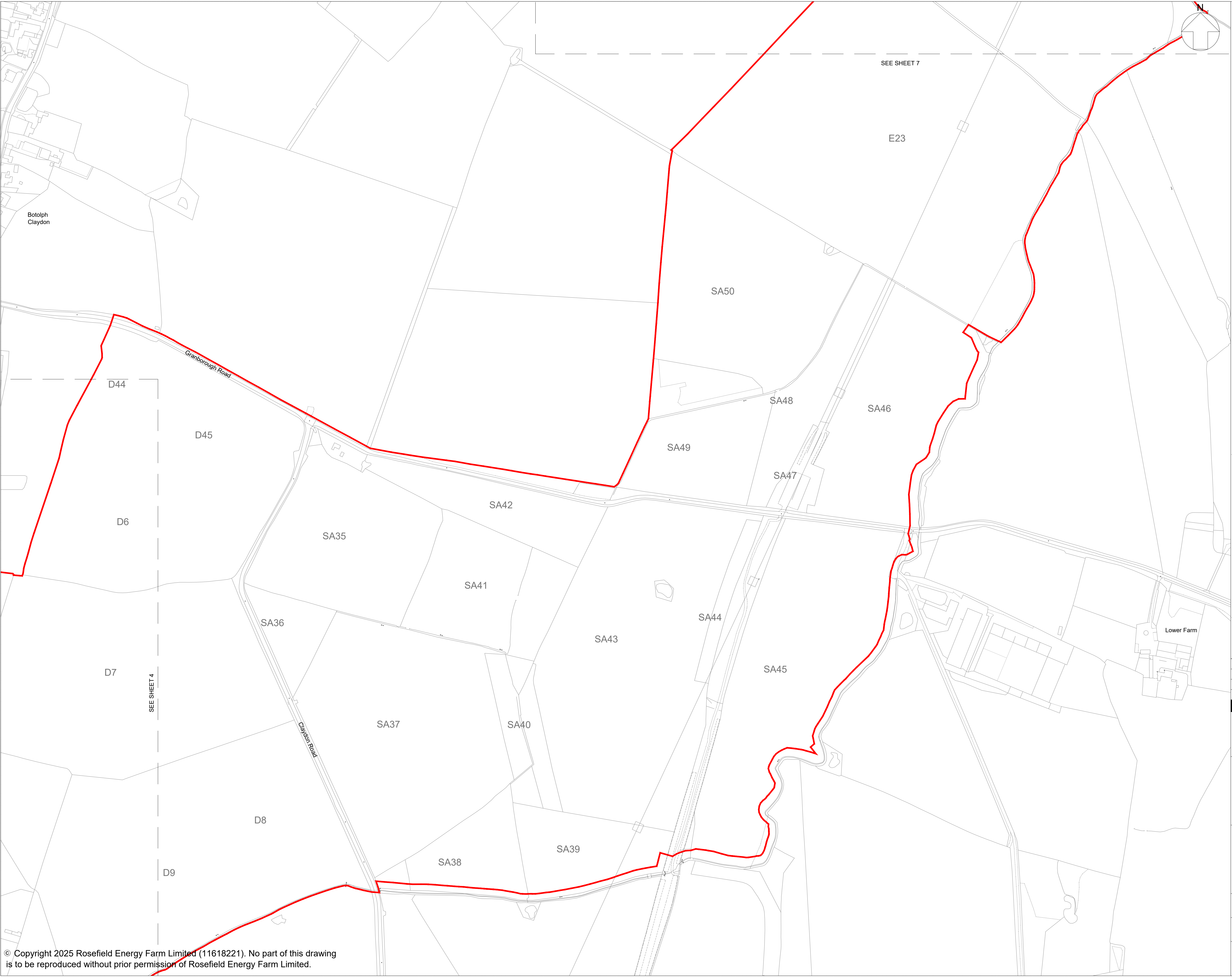
DRAWN:
LDA

SCALE:
1:2,500 at A1

SCALE BAR:

© Copyright 2023 Rosefield Energy Farm Limited (11618221). No part of this drawing is to be reproduced without prior permission of Rosefield Energy Farm Limited.

This drawing may contain: Ordnance Survey material by permission of Ordnance Survey on behalf of the Controller of His Majesty's Stationery Office © Crown Copyright 2024. All rights reserved. Reference number 0100031673
OS Open data / © Natural England / © DEFRA / © DECC / © English Heritage. Aerial Photography - ESRI, DigitalGlobe, GEOEye, i-cubed, USDA FSA,USGD, AEX, Getmapping, Aerogrid, IGN,JGP,swisstopo, the GIS User Community



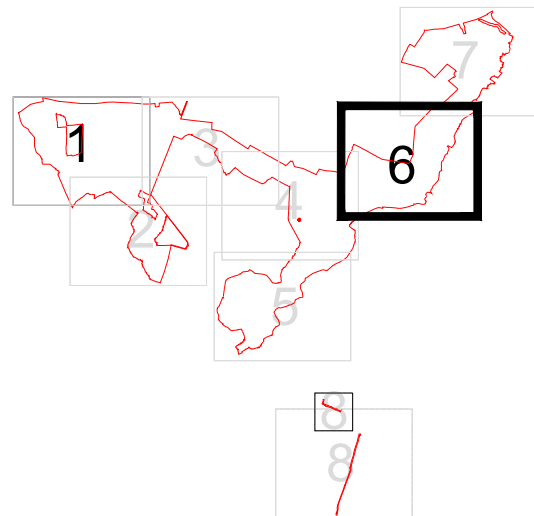
LEGEND:

- Order Limits
- Areas outside the Order Limits
- OS Grid Reference SP728234 472848 'E', 223482 'N'

NOTES:

- 1. Refer to key plan for notes.

KEY PLAN:



02	OCT 2025	UPDATES FOLLOWING S51 ADVICE	LDA	LDA	EDF
01	SEPT 2025	DICO SUBMISSION	LDA	LDA	EDF
REVISION	DATE	DESCRIPTION	DRAWN	CHECKED	APPROVED

Rosefield Solar Farm



DOCUMENT:
APPLICATION DRAWINGS
FOR APPROVAL

REGULATION 5(2)(o)

DRAWING TITLE:
LOCATION, ORDER LIMITS AND
GRID COORDINATE PLANS
SHEET 6 OF 8

PIN REFERENCE NUMBER:
EN010158/APP/2.1.2

REVISION:
02

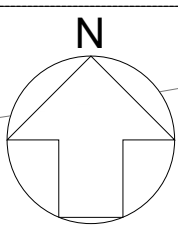
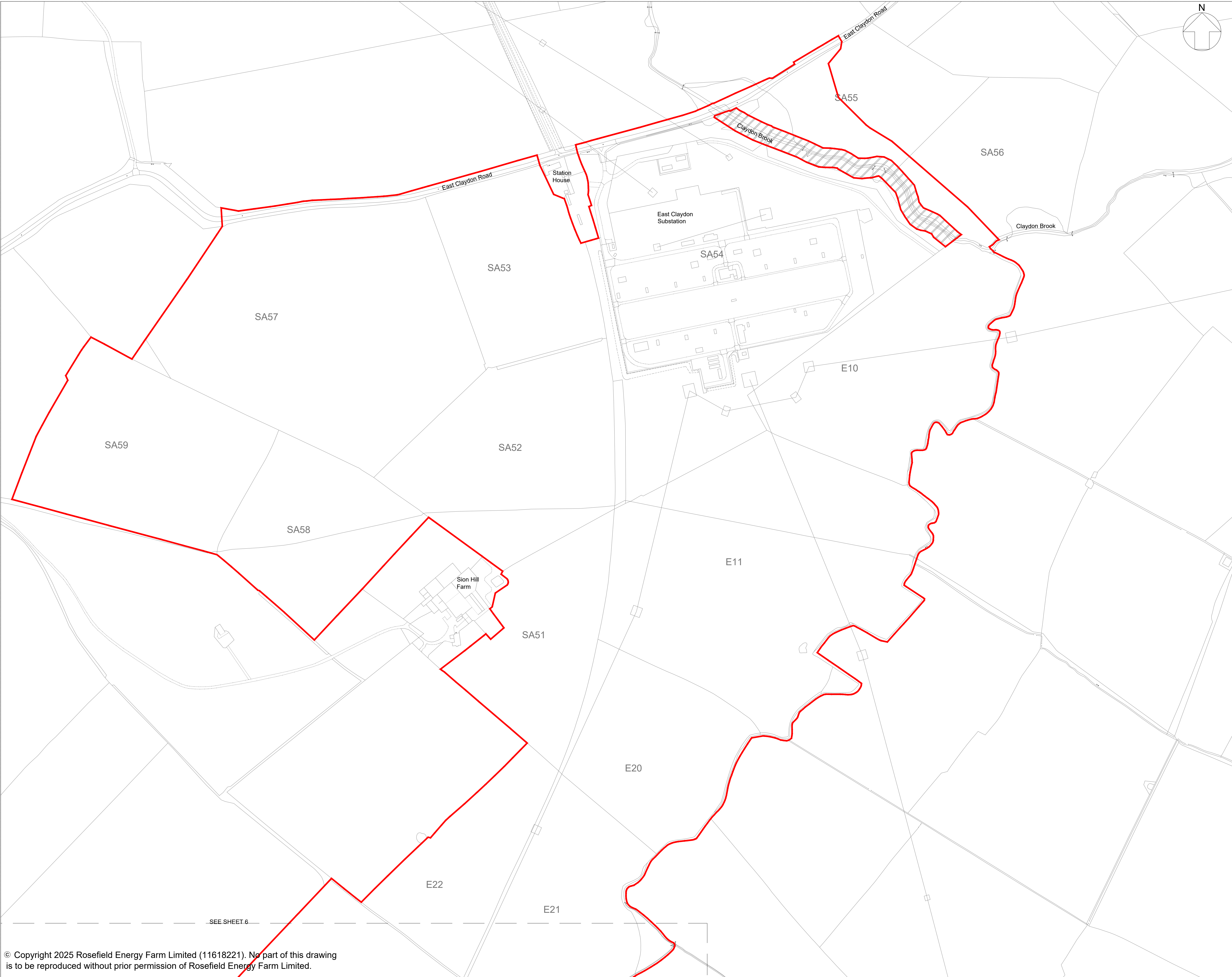
DATE:
OCT 2025

DRAWN:
LDA

SCALE:
1:2,500 at A1



© Copyright 2025 Rosefield Energy Farm Limited (11618221). No part of this drawing is to be reproduced without prior permission of Rosefield Energy Farm Limited.



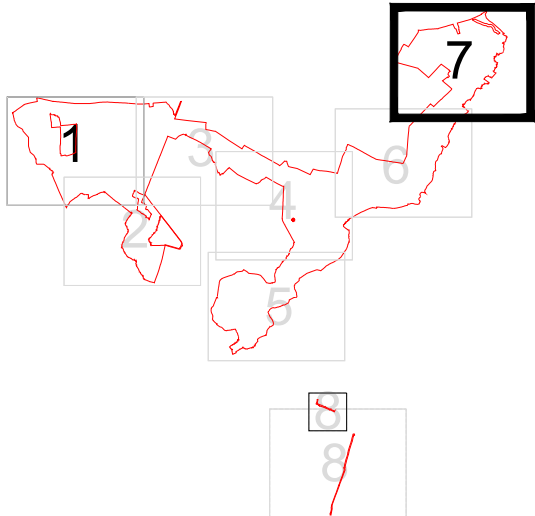
LEGEND:

- Order Limits
- Areas outside the Order Limits
- OS Grid Reference SPT28234 472848 'E, 223482' N

NOTES:

1. Refer to key plan for notes.

KEY PLAN:



02	OCT 2025	UPDATES FOLLOWING S51 ADVICE	LDA	LDA	EDF
01	SEPT 2025	DICO SUBMISSION	LDA	LDA	EDF
REVISION	DATE	DESCRIPTION	DRAWN	CHECKED	APPROVED

Rosefield Solar Farm



DOCUMENT:
APPLICATION DRAWINGS
FOR APPROVAL

REGULATION 5(2)(o)

DRAWING TITLE:
LOCATION, ORDER LIMITS AND
GRID COORDINATE PLANS
SHEET 7 OF 8

PIN REFERENCE NUMBER:
EN010158/APP/2.1.2

REVISION:
02

DATE:
OCT 2025

DRAWN:
LDA

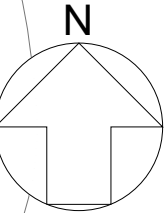
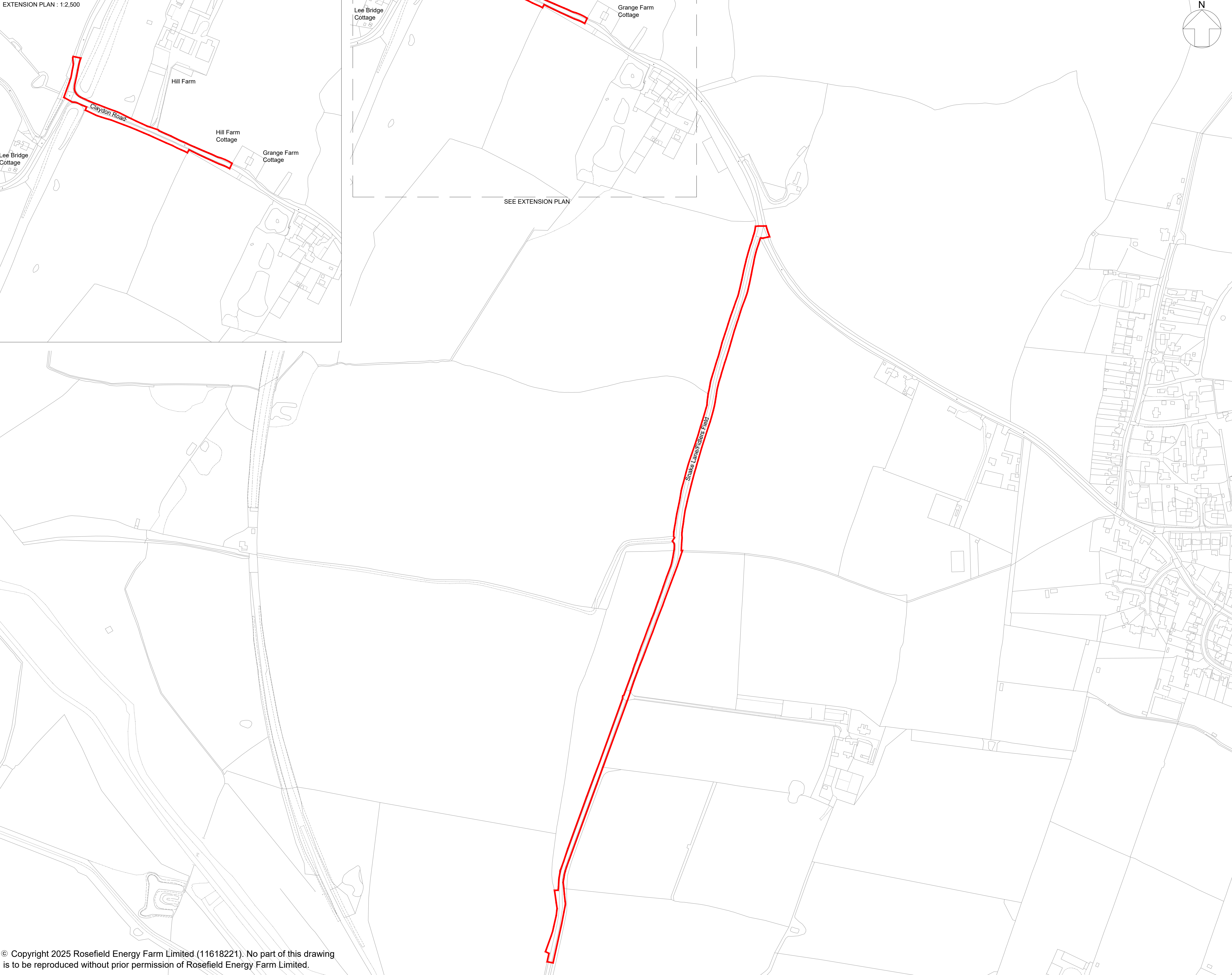
SCALE:
1:2,500 at A1

SCALE BAR:



© Copyright 2025 Rosefield Energy Farm Limited (11618221). No part of this drawing is to be reproduced without prior permission of Rosefield Energy Farm Limited.

EXTENSION PLAN : 1:2,500



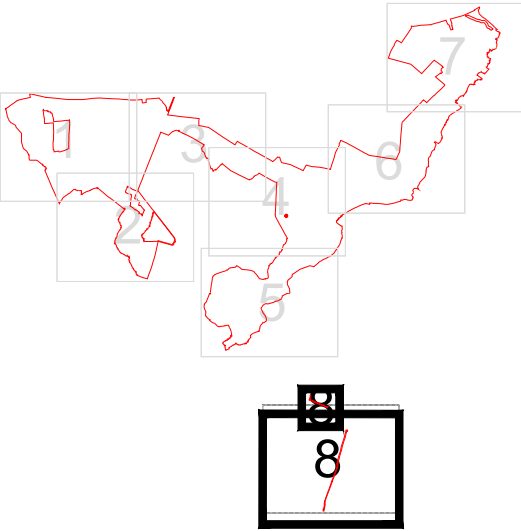
LEGEND:

- Order Limits
- Areas outside the Order Limits
- OS Grid Reference SP728234 472848 'E', 223482 'N'

NOTES:

- Refer to key plan for notes.

KEY PLAN:



02	OCT 2025	UPDATES FOLLOWING S51 ADVICE	LDA	LDA	EDF
01	SEPT 2025	DICO SUBMISSION	LDA	LDA	EDF
REVISION	DATE	DESCRIPTION	DRAWN	CHECKED	APPROVED

Rosefield Solar Farm



DOCUMENT:
APPLICATION DRAWINGS
FOR APPROVAL

REGULATION 5(2)(o)

DRAWING TITLE:
LOCATION, ORDER LIMITS AND
GRID COORDINATE PLANS
SHEET 8 OF 8

PIN REFERENCE NUMBER:
EN010158/APP/2.1.2

REVISION:
02

DATE:
OCT 2025

DRAWN:
LDA

SCALE:
1:2,500 at A1

SCALE BAR:



© Copyright 2025 Rosefield Energy Farm Limited (11618221). No part of this drawing is to be reproduced without prior permission of Rosefield Energy Farm Limited.

This drawing may contain: Ordnance Survey material by permission of Ordnance Survey on behalf of the Controller of His Majesty's Stationery Office © Crown Copyright 2024. All rights reserved. Reference number 0100031673
OS Open data / © Natural England / © DEFRA / © DECC / © English Heritage. Aerial Photography - ESRI, DigitalGlobe, GEOEye, i-cubed, USDA FSA,USGD, AEX, Getmapping, Aerogrid, IGN,JGP,swisstopo, the GIS User Community

